



FOBA tripod heads. The camera-tripod safety link.

FOBA: complete systems for photography

FOBA has supplied photographic shooting equipment* for more than 70 years:

- Studio stands and tripods
- SUPERBALL® tripod heads
- ROOF-TRACK and MEGA-TRACK ceiling rail systems
- COMBITUBE™ system, a kind of Meccano kit for all sorts of uses
- Shooting tables and unroller devices for backgrounds
- Lamp stands
- Turntables for efficient 360° spin visualization

FOBA provides spare parts on a long-term basis.

Since most FOBA components are screwed in, they can easily be taken care of and serviced by the user.

Most FOBA products are finished in reflex-free black.

Universal best references

FOBA products are used worldwide by public and educational institutions, museums, photographers and reputed companies.

Sustainable production

FOBA products are made in Switzerland according to the company's traditional environment-considerate manufacturing methods. First-class materials are processed with craftsmanship. FOBA's legacy of successful studio and photography equipment guarantees practical, well-proven and efficient products.

FOBA products are:

- modular, i.e. versatile
- interchangeable, i.e. can be upgraded at any time
- sturdy, i.e. have a long life span

These characteristics spell out high efficiency and usefulness. So investments in FOBA products are well worth their price.

FOBA tripod heads – quality made in Switzerland

FOBA supplies four different tripod **ball head** lines offering optimal stability, ergonomics and safety. They are designed for long-lasting use under harsh working conditions.

Product	Purpose of use
SUPERBALL®	Large cameras and sensors; Need for modularity
MINI-SUPERBALL®	Middle-sized cameras and sensors; Need for modularity
M-2 ball head	When compact construction required
M-1 ball head	When light construction required

Both of the FOBA **tilting heads** are built for heavy view cameras and sensors, allowing precise positioning and secure locking.

The additional **accessories** complement the tripod heads according to the needs of photographers and of the industry.













Technical designation of the usual threads in photography and measurement technology:

- Big thread: 3/8"
- Small thread: 1/4"

In the measurement technology, even bigger threads (5/8") may be used (For thread converters: see page 8).



The tilting head ASMIO is especially appreciated when used with view cameras.

Features	SUPERBALL® BALLA / BALLO	MINI-SUPERBALL®		M-Line, M-2 BOLLA / BOLLO	M-Line, M-1 BENTO / BENTA	Tilting heads ASMIO / ASMIA
		BALMU / BALMI	BALLU / BALLI			
Friction	Yes	Yes	Yes	No	No	No
Locking with locking lever (Quick-Lock)	Yes	Yes	Yes	No	No	Yes
Panorama with 5° intervals	Yes	Yes	BALTA optionally	Yes	No	Yes
Modular	Yes	Yes	Yes	No	No	No
With quick-release unit or with one axis						
With camera plate or with two axes						

* For further information: see www.foba.com

Features of the tripod heads



High flexibility

All FOBA ball heads and all FOBA tilting heads can be inclined more than 90° from the vertical axis. Consequently, pictures of objects on both camera positions can be taken easily.



Precise and sturdy

The SUPERBALL® and MINI-SUPERBALL® ball heads are characterized by the relatively big and precisely crafted ball which moves on plastic bearings. This imparts them their highly appreciated features such as their smooth movements, precise directing, great tension force, etc.



Friction

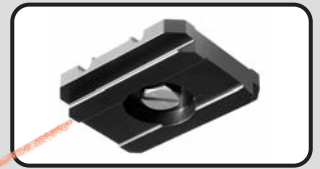
The ball heads SUPERBALL® and MINI-SUPERBALL® possess a separate adjusting knob regulating the friction. Small cameras and sensors require little friction to

have an accurately controlled positioning while heavier ones require greater one.



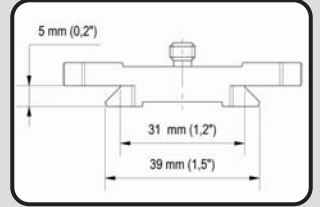
Custom products

Many other mounting devices for special applications can be developed upon request, besides the standard ones FOBA has on offer. FOBA's experts will be glad to assist you with their advice.



User-friendly

The quick-release plate can easily be slid into its quick-release unit thanks to its edges being taken off.



Profile of the quick-release plates

The quick-release plates fit all of FOBA's quick-release units (BALSO, BALSJ, BALSA) as well as many other quick-release units available on the market. For the choice of the right plate, the length of the quick-release unit must be considered.



Mounting of the quick-release plates

Easy, quick and secure fixation: use a coin (which is always at hand).



Scale

The various panoramas are graduated properly in intervals of 5°, with a lock screw.



Small movements, big impact (Quick-Lock)

The position of the camera or sensor on the ball heads SUPERBALL® and MINI-SUPERBALL® or on the tilting heads ASMIA and ASMIO is fixed with a locking lever. Thanks to its ingenious mechanism, only a small movement is needed.

This clever construction has many advantages:

- only a small amount of rotating force is needed to produce a great tension force and thus to stop the ball or tilt axes securely
- the ball or the tilt axes can be fixed in rotating the locking lever in both directions
- about a quarter of a turn is needed for the fixation or the releasing, allowing efficient installing and working conditions.



Modular

The ball heads SUPERBALL® and MINI-SUPERBALL® are constructed modularly. This offers many interesting possibilities in their daily use.

FOBA SUPERBALL®: for medium and large-format cameras

FOBA's SUPERBALL® ball heads are very sturdy, precise and long lasting. This accounts for their vast popularity in photo studios, rental studios, rental shops as well as in the industry.



FOBA SUPERBALL® (BALLA)

The ball head BALLA is equipped both with a handy friction clamp and also with a locking lever for the fixation of the camera (Quick-Lock). It has a panorama plate with full 360° rotation, calibrated in degrees (intervals of 5°) and with a separate lock screw. Equipped with the quick-release unit BALS0, it ensures great operating comfort and highest safety (one safety plug which can be removed and one which can be tilted). A wide variety of quick-release plates are available, all of which can remain on the cameras. Suited for medium-format and large cameras as well as for sensors.

Length of the quick-release unit:	84 mm (3.3")
Diameter:	76 mm (3.0")
Height:	130 mm (5.1")
Inner thread at bottom:	3/8"
Weight:	1.4 kg (3.1 lbs)
Load capacity:	15 kg (33 lbs)



FOBA SUPERBALL® (BALLO)

The ball head BALLO is equipped both with a handy friction clamp and also with a locking lever for the fixation of the camera (Quick-Lock). It has a panorama plate with full 360° rotation, calibrated in degrees (intervals of 5°) and with a separate lock screw. It comes with a reversible camera plate, threaded 3/8" and 1/4" (BALPO). Suited for medium-format and large cameras as well as for sensors.

Diameter:	76 mm (3.0")
Height (upper screw excl.):	130 mm (5.1")
Inner thread at bottom:	3/8"
Weight:	1.32 kg (2.9 lbs)
Load capacity:	15 kg (33 lbs)



BALS0

Quick-release unit for SUPERBALL®. Takes various quick-release plates. With one removable and one tilting safety plug. Fixed to SUPERBALL® with two screws.

Length:	84 mm (3.3")
Width (without lock screw):	60 mm (2.4")
Height:	15 mm (0.6")
Weight:	120 g (0.26 lbs)



BALPO

Reversible camera plate with 1/4" and 3/8" threads. Fixed to SUPERBALL® with two screws.

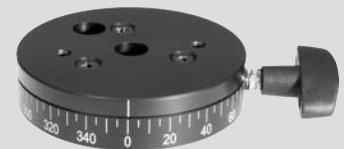
Diameter:	76 mm (3.0")
Height (screws excl.):	8 mm (0.3")
Weight:	50 g (0.11 lbs)



Thanks to the panorama plate BALTO, wobble-free panorama shots can be taken with SUPERBALL®.



Panorama shots in overhanging yet horizontal position thanks to the panorama plate BALTO and the mini tripod ASNIO which is fixed onto the wooden bench with COMBITUBE* and the screw clamp COGAE.



BALTO

Panorama plate, to be mounted between the camera plate BALPO or the quick-release unit BALS0 and the main part of the SUPERBALL®. Full 360° rotation, calibrated in degrees (5° intervals), with lock screw. Very sturdy design, well suited for heavy cameras and sensors.

Diameter:	76 mm (3.0")
Height:	20 mm (0.8")
Weight:	250 g (0.55 lbs)

FOBA MINI-SUPERBALL®: for medium and small-format cameras

The smaller FOBA MINI-SUPERBALL® is the perfect tripod mounting for small and medium format cameras. It has been built according to the well-tried technology of SUPERBALL® and ensures a strong hold of the camera.



FOBA MINI-SUPERBALL® PLUS (BALMU)

The ball head BALMU is equipped both with a handy friction clamp and also with a locking lever for the fixation of the camera (Quick-Lock). It has a panorama plate with full 360° rotation, calibrated in degrees (intervals of 5°) and with a separate lock screw (BALTA). Equipped with the quick-release unit BALSU, it ensures great operating comfort and highest safety (one safety plug which can be removed and one which can be tilted). A wide variety of quick-release plates are available, all of which can remain on the cameras. Suited for small- and medium-format cameras as well as for sensors.

Length of the quick-release unit:	60 mm (2.4")
Diameter:	64 mm (2.5")
Height:	120 mm (4.7")
Inner thread at bottom:	3/8"
Weight:	820 g (1.81 lbs)
Load capacity:	12 kg (26.5 lbs)



FOBA MINI-SUPERBALL® PLUS (BALMI)

The ball head BALMI is equipped both with a handy friction clamp and also with a locking lever for the fixation of the camera (Quick-Lock). It has a panorama plate with full 360° rotation, calibrated in degrees (intervals of 5°) and with a separate lock screw (BALTA). It comes with a reversible camera plate, threaded 3/8" and 1/4" (BALMO). Suited for small- and medium-format cameras as well as for sensors.

Diameter:	64 mm (2.5")
Height:	
(upper screw excl.):	115 mm (4.5")
Inner thread at bottom:	3/8"
Weight:	740 g (1.63 lbs)
Load capacity:	12 kg (26.5 lbs)



FOBA MINI-SUPERBALL® (BALLU)

The ball head BALLU is equipped both with a handy friction clamp and also with a locking lever for the fixation of the camera (Quick-Lock). It can further be complemented with the panorama plate BALTA.

Equipped with the quick-release unit BALSU, it ensures great operating comfort and highest safety (one safety plug which can be removed and one which can be tilted). A wide variety of quick-release plates are available, all of which can remain on the cameras.

Suited for small- and medium-format cameras as well as for sensors.

Length of the quick-release unit:	60 mm (2.4")
Diameter:	64 mm (2.5")
Height:	105 mm (4.1")
Inner thread at bottom:	3/8"
Weight:	630 g (1.39 lbs)
Load capacity:	12 kg (26.5 lbs)



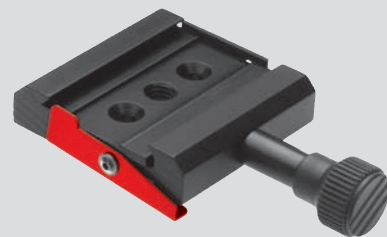
FOBA MINI-SUPERBALL® (BALLI)

The ball head BALLI is equipped both with a handy friction clamp and also with a locking lever for the fixation of the camera (Quick-Lock). It can further be complemented with the panorama plate BALTA.

It comes with a reversible camera plate, threaded 3/8" and 1/4" (BALMO).

Suited for small- and medium-format cameras as well as for sensors.

Diameter:	64 mm (2.5")
Height:	
(upper screw excl.):	98 mm (3.9")
Inner thread at bottom:	3/8"
Weight:	580 g (1.28 lbs)
Load capacity:	12 kg (26.5 lbs)



BALSU

Quick-release unit for MINI-SUPERBALL®, takes various quick-release plates and has a removable and a tilting safety plug. Fixed to MINI-SUPERBALL® with two screws.

Length:	60 mm (2.4")
Width:	
(without lock screw):	60 mm (2.4")
Height:	15 mm (0.6")
Weight:	120 g (0.26 lbs)



BALMO

Reversible camera plate with 1/4" and 3/8" threads. Fixed to MINI-SUPERBALL® with two screws.

Diameter:	54 mm (2.1")
Height (screws excl.):	8 mm (0.3")
Weight:	50 g (0.11 lbs)



BALTA

Panorama plate for MINI-SUPERBALL®. Full 360° rotation, calibrated in degrees (5° intervals) and with lock screw. Is mounted at the bottom of the ball heads BALLU or BALLI.

Diameter:	64 mm (2.5")
Height:	23.5 mm (0.9")
Inner thread at bottom:	3/8"
Weight:	230 g (0.51 lbs)

FOBA SUPERBALL® M-Line: The small ball head that delivers high performance...

The M-Line is the «Light weight» of the SUPERBALL® family. Lasting precision and functionality mark the key features of the ball heads of the M-Line. The heads guarantee optimum stability, ergonomic operation and maximum clamping force and are designed to withstand many years of use under harsh everyday conditions. The FOBA SUPERBALL® M-Line is ideal for small- and medium-format cameras and ensures both precise camera movement and reliable locking.



SUPERBALL® M-2 (BOLLA)

Compact and sturdy design and great clamping force thanks to the new clamping system. Equipped with the quick-release unit BALSAs, it ensures great operating comfort and highest safety (one safety plug which can be removed and one which can be tilted). A wide variety of quick-release plates are available, all of which can remain on the cameras. It has a panorama plate with full 360° rotation, calibrated in degrees (intervals of 5°) and with a separate lock screw.

Thread converter 3/8" to 1/4" (BALME) for stand at bottom.

Is also suited for large and heavy cameras or for cameras with long and heavy lenses.

Length of the quick-release unit:	59 mm (2.3")
Diameter:	56 mm (2.2")
Height:	95 mm (3.7")
Inner thread at bottom:	3/8"
Weight:	550 g (1.21 lbs)
Load capacity:	12 kg (26.5 lbs)



SUPERBALL® M-2 (BOLLO)

Compact and sturdy design and great clamping force thanks to the new clamping system. It has a panorama plate with full 360° rotation, calibrated in degrees (intervals of 5°) and with a separate lock screw.

Thread converter 3/8" to 1/4" (BALME) for stand at bottom; camera plate with 1/4" thread included.

Is also suited for large and heavy cameras or for cameras with long and heavy lenses.

Diameter:	56 mm (2.2")
Height (upper screw excl.):	83 mm (3.3")
Inner thread at bottom:	3/8"
Weight:	440 g (0.97 lbs)
Load capacity:	12 kg (26.5 lbs)



SUPERBALL® M-1 (BENTA)

Small and compact design, high clamping force (4,5 kg / 10 lbs – for a lever length of 300 mm / 11.8"), multifunctional locking system with wing knob. Thread converter 3/8" to 1/4" (BALME) for stand at bottom; camera plate with 1/4" thread included.

Suited for small- and medium-format cameras.

Diameter:	52 mm (2.0")
Height (upper screw excl.):	92 mm (3.6")
Inner thread at bottom:	3/8"
Weight:	275 g (0.61 lbs)
Load capacity:	8 kg (17.6 lbs)

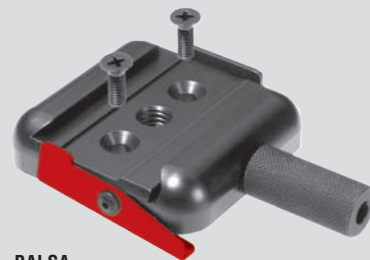
SUPERBALL® M-1 (BENTO)

Small and compact design, high clamping force (4,5 kg / 10 lbs – for a lever length of 300 mm / 11.8"), multifunctional locking system with wing knob. Thread converter 3/8" to 1/4" (BALME) for stand at bottom.

Equipped with the quick-release unit BALSAs, it ensures great operating comfort and highest safety (one safety plug which can be removed and one which can be tilted). A wide variety of quick-release plates are available, all of which can remain on the cameras.

Suited for small- and medium-format cameras.

Length of the quick-release unit:	59 mm (2.3")
Diameter:	52 mm (2.0")
Height:	110 mm (4.3")
Inner thread at bottom:	3/8"
Weight:	405 g (0.89 lbs)
Load capacity:	8 kg (17.6 lbs)



BALSA

Quick-release unit for the SUPERBALL® M-Line, takes various quick-release plates and has a removable and a tilting safety plug. Fixed to SUPERBALL® M-Line with two screws.

Length:	59 mm (2.3")
Width (without lock screw):	60 mm (2.4")
Height:	15 mm (0.6")
Weight:	120 g (0.26 lbs)



Thanks to the practical and light SUPERBALL® M-1 tripod head and COMBITUBE™ elements from FOBA, pretty much nothing is impossible.



The ball head SUPERBALL® M-1 is also very suited to be mounted onto the sliding clamp of a lamp stand* when doing portrait takes in positions near to the ground (in the picture: sliding clamp SAONO with the interchangeable adapter CEBLO 3/8 on the lamp stand STARI). While the camera has a good hold, quick movements up and down, laterally as well as the tilting of the camera are possible.



Because of the hollow spaces inside of the housing the M-1 tripod heads are very light weight.

Quick-release plates



BALPI

Quick-release plate with 1/4" thread for quick-release unit BALSO for SUPERBALL® (fits also other quick-release units). The removed edges allow a smooth and quick insertion into the quick-release unit.

Length:	80 mm (3.1")
Width:	60 mm (2.4")
Height:	11 mm (0.4")
Weight:	110 g (0.24 lbs)



BALPU

Quick-release plate with 3/8" thread for quick-release unit BALSO for SUPERBALL® (fits also other quick-release units). The removed edges allow a smooth and quick insertion into the quick-release unit.

Length:	80 mm (3.1")
Width:	60 mm (2.4")
Height:	11 mm (0.4")
Weight:	110 g (0.24 lbs)



When using Hasselblad cameras, the small, eccentric screw of the quick-release plates BALPI and BALPU can be unscrewed some bit, so that the plate is fixed safely onto the camera and doesn't twist.



Safe working with the Hasselblad camera thanks to the quick-release plates BALPI and BALPU.



BALTE

Quick-release plate with 1/4" thread for quick-release unit BALSJ or BALSQ (fits also other quick-release units). Thanks to the rubber coating, the camera is mounted skid-proof in any position. Thanks to the two grooves (of two different depths) cables can be securely fixed. The removed edges allow a smooth and quick insertion into the quick-release unit.

Length:	57 mm (2.2")
Width:	50 mm (2.0")
Height:	11 mm (0.4")
Weight:	90 g (0.20 lbs)



BALPE

Quick-release plate with 3/8" thread for quick-release unit BALSJ or BALSQ (fits also other quick-release units). Thanks to the rubber coating, the camera is mounted skid-proof in any position. Thanks to the two grooves (of two different depths) cables can be securely fixed. The removed edges allow a smooth and quick insertion into the quick-release unit.

Length:	57 mm (2.2")
Width:	50 mm (2.0")
Height:	11 mm (0.4")
Weight:	90 g (0.20 lbs)

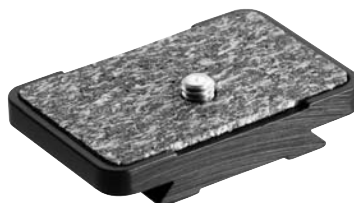


Handy work thanks to the quick-release plate BALTE or BALPE.



Efficient securing of the cables even when working hands-free. All your cables (data cables, power or control signal cords) secured against tearing off.

Quick-release plates with other lengths and designs are available upon request.



BALPA

Short quick-release plate for small-format cameras and 1/4" thread (fits all FOBA quick-release units as well as many other quick-release units available on the market).

Length:	40 mm (1.6")
Width:	60 mm (2.4")
Height:	11.5 mm (0.45")
Weight:	55 g (0.12 lbs)



BALMA

Quick-release plate with 1/4" thread for PhaseOne and Mamiya type 645 AF/DF (fits all FOBA quick-release units as well as many other quick-release units available on the market).

Length:	50 mm (2.0")
Width:	60 mm (2.4")
Height:	10 mm (0.4")
Weight:	60 g (0.13 lbs)

Panoramas



ASTIU

Panorama plate; full 360° rotation, calibrated in degrees (intervals of 5°), with lock screw (BALTO); reversible camera plate with 3/8" and 1/4" threads (BALPO). Very sturdy design, well suited for heavy cameras and sensors.

Diameter:	76 mm (3.0")
Height (upper screw excl.):	27 mm (1.1")
Inner thread at bottom:	3/8"
Weight:	350 g (0.8 lbs)



BALTU

Panorama plate; full 360° rotation, calibrated in degrees (intervals of 5°), with lock screw; camera plate with a 3/8" or a 1/4" thread, as desired. Allows wobble-free panorama shots when mounted onto a tripod head. Sturdy design, suited for medium-format cameras and sensors.

Diameter:	64 mm (2.5")
Height (upper screw excl.):	25 mm (1.0")
Inner thread at bottom:	3/8"
Weight:	270 g (0.6 lbs)

Detail of the panorama plate BALTU with the smaller 1/4" thread.



Panorama shots can be taken in horizontal positioning even in difficult shooting conditions thanks to the plates ASTIU or BALTU (wobble-free). In the picture: mini tripod ASNIO with extended legs from COMBITUBE* elements and fixed onto the balustrade with screw clamp COGAE.

Thread converters



BALME

Reversible thread / tap converter 1/4" to 3/8", as well as 3/8" to 1/4". Set of 5 pieces.



CEBLO 1/4

Thread converter from the bigger 3/8" to the smaller 1/4" thread, radially bored for tightening bar.

Upper screw thread:	1/4"
Lower inner thread:	3/8"
Length (upper screw excl.):	30 mm (1.2")
Diameter:	18 mm (0.7")
Weight:	50 g (0.1 lbs)



BALGI

Thread converter from the bigger 3/8" to the smaller 1/4" thread.

Upper screw thread:	1/4"
Lower inner thread:	3/8"
Height (upper screw excl.):	23 mm (0.9")
Diameter:	67 mm (2.6")
Weight:	220 g (0.5 lbs)



BALGU

Thread converter between stand and measuring device, bridging various threads, with radial boring for tightening bar.

Upper screw thread:	5/8"
Lower inner thread:	3/8"
Height (upper screw excl.):	20 mm (0.8")
Diameter:	25 mm (1.0")
Weight:	80 g (0.2 lbs)

Example of a custom product



BALCO

Quadratic panel to mount screens on the ball heads SUPERBALL® and MINI-SUPERBALL®.

Side length:	12 cm (4.72")
Distance between the inner quadratic perforation:	7.5 cm (2.95")
Distance between the outer quadratic perforation:	10.0 cm (3.94")
Weight:	200 g (0.44 lbs)



Thanks to the COMBITUBE™ system* with its variability and modularity, along with the panel BALCO, screens can be mounted almost anywhere in the right position and height.



Handy stand for screens, made of:

- CESRA support
- CONRO AS, COMBITUBE™ 80 cm (31.50")
- CESTA plate
- MINI-SUPERBALL®
- BALCO, panel to mount the screen

* Visit www.foba.com to learn more about the versatile COMBITUBE™ system

FOBA tilting heads

FOBA's tilting heads ASMIO (1 axis) and ASMIA (2 axes) are designed for the harshest conditions. They are especially well suited for view cameras and heavy sensors. Moreover, the dual tilting head ASMIA is available in various variants, with additional handle grip or with quick-release unit.



ASMIO

Tilting head with one tilt axis through over 90°. Fixation with locking lever (Quick-Lock). The tilt axis has a graduation ranging from -15° to +105°, labelled in intervals of 15°; incl. 3/8" camera screw (1/4" available upon request). The camera plate is provided with a round level.

It comes with a panorama plate mounted on needle bearings with full 360° rotation, calibrated in degrees (intervals of 5°) and with a separate lock screw. Especially suited for large and heavy cameras (e.g. view cameras) and sensors.

Diameter of panorama:	80 mm (3.1")
Height (when camera is horizontal):	110 mm (4.3")
Inner thread at bottom:	3/8"
Weight:	1.35 kg (3.0 lbs)
Load capacity:	20 kg (44 lbs)



ASMIA

Dual tilting head with two tilt axes through over 90°. Fixation with locking lever (Quick-Lock). The tilt axes have a graduation ranging from -15° to +105°, labelled in intervals of 15°; incl. 3/8" camera screw (1/4" available upon request). The camera plate is provided with a round level.

It comes with a panorama plate mounted on needle bearings with full 360° rotation, calibrated in degrees (intervals of 5°) and with a separate lock screw. Especially suited for large and heavy cameras and sensors.

Diameter of panorama:	80 mm (3.1")
Height (when camera is horizontal):	115 mm (4.5")
Inner thread at bottom:	3/8"
Weight:	1.95 kg (4.3 lbs)
Load capacity:	20 kg (44 lbs)



ASMIA P

Dual tilting head with handle grip, based on the dual tilting head ASMIA. The additional grip allows to operate the camera or sensor accurately in both tilting positions. The advantage of the design is that only one grip is needed as it can be panned by 90°. This is handy and leads to an efficient working.

Same features as ASMIA.

Length of the grip:	15 cm (5.9")
Weight:	2.2 kg (4.85 lbs)



ASMIA Q

Dual tilting head with quick-release unit BALSQ, based on the dual tilting head ASMIA. Cameras and sensors can quickly be mounted or exchanged thanks to the quick-release unit. Else, same features as ASMIA. Equipped with the quick-release unit BALSQ, it ensures great operating comfort and highest safety (one safety plug which can be removed and one which can be tilted). A wide variety of quick-release plates are available, all of which can remain on the cameras.

Length of the quick-release unit:	84 mm (3.3")
Weight:	2.1 kg (4.63 lbs)

Mountings for tripod heads



BALGO

Base plate for mounting tilting and ball heads on floor or tabletop.

Screw with thread:	3/8"
Corner dimension:	235 mm (9.3")
Height (upper screw excl.):	19 mm (0.7")
Weight:	900 g (1.98 lbs)



CESTU

Reversible camera plate with 1/4" and 3/8" threads for mounting camera on FOBA COMBITUBE*.

Diameter of camera plate:	54 mm (2.1")
Height (upper screw excl.):	56 mm (2.2")
Diameter of the hole:	25 mm (1.0")
Weight:	200 g (0.44 lbs)



Base plate CESRA and COMBITUBE™ elements used as stand for camera plate CESTU and camera.

* for more details about the handy COMBITUBE™ system check out www.foba.com

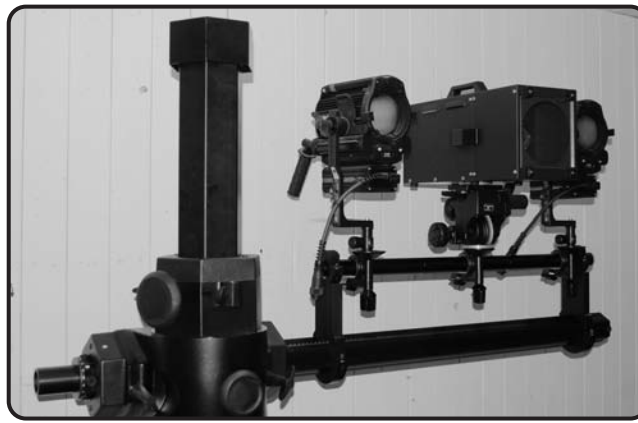
Mountings for tripod heads



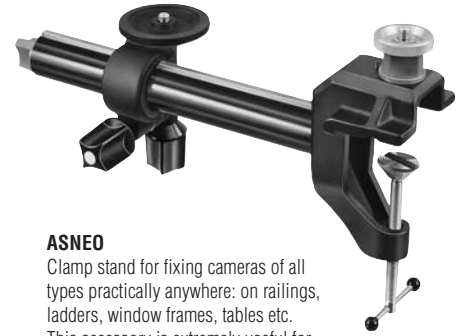
ASNEA

Clamp for clamp stand ASNEO. Camera plate (thread 3/8") included which can be fixed on top or on side of the clamp.

Clamping range for flat objects: 73 mm (2.87")
 Clamping range for tubes with a 60 mm (2.36") diameter
 Diameter of the camera plate: 42 mm (1.7")
 Weight: 670 g (1.48 lbs)



High speed camera and light sources mounted onto a studio stand, to shoot and analyse the flight characteristics of a projectile. Equipment needed: three camera holders ASNAO mounted onto two tubes ASNEU, fixed onto the horizontal beam of the studio stand with two special adaptors.



ASNEO

Clamp stand for fixing cameras of all types practically anywhere: on railings, ladders, window frames, tables etc. This accessory is extremely useful for open-air photography in difficult situations where normal tripods cannot be used. It is very stable even in harsh wind conditions.

The tube can be mounted on the clamping piece horizontally as well as vertically. The mounting may be extended with further ASNEU tubes. The clamping piece ASNEA is extremely sturdy and has a great clamping range.

Clamping range for flat objects: 73 mm (2.87")
 Clamping range for tubes with a 60 mm (2.36") diameter
 Usable length of tube: 27 cm (10.6")
 Weight: 1.45 kg (3.2 lbs)



ASNEU

Extension tube for ASNEO clamp stand. To be either mounted on clamp ASNEA or screwed as an extension on existing tube. Very sturdy and accurate design.

Usable length: 27 cm (10.6")
 Weight: 340 g (0.75 lbs)



Thanks to the clamp stand ASNEO, even heavy cameras or cameras with long lenses can be used flexibly and steadily for shootings in- and outdoors.



ASNAO

Camera holder threaded 3/8" for clamp stand ASNEO or for the extension tube ASNEU.

Diameter of the camera plate: 77 mm (3.0")
 Weight: 450 g (0.99 lbs)



Example of outdoor application of ASNEO clamp stand with ball head MINI-SUPERBALL®



Clamp stand ASNEO with tilting head ASMIO used for jewellery shootings. The cone DUPLI serves as diffuser, producing very soft light.



ASNEO clamp stand with extension tube ASNEU for repro shots.

Index of products

Product	Page	Description
ASMIA	9	Dual tilting head
ASMIA P	9	Dual tilting head with handle grip
ASMIA Q	9	Dual tilting head with quick-release unit
ASMIO	9, 2, 10	Tilting head
ASNAO	10	Camera holder to clamp stand ASNEO
ASNEA	10	Clamp to clamp stand ASNEO, aperture 73 mm, camera plate with 3/8" thread
ASNEO	10	Clamp stand, aperture 73 mm, length 27 cm
ASNEU	10	Extension tube to ASNEO clamp stand, 27 cm
ASTIU	8, 11	Panorama plate, 3/8" and 1/4" thread
BALCO	8	Panel to mount screens on SUPERBALL and MINI-SUPERBALL
BALGI	8	Thread converter, top 1/4" thread, bottom 3/8" tap
BALGO	9	Support for tripod heads, floor or table, 3/8" thread
BALGU	8	Thread converter, top 5/8" thread, bottom 3/8" tap
BALLA	4	SUPERBALL with quick-release unit
BALLI	5	MINI-SUPERBALL with camera plate, 3/8" and 1/4" thread
BALLO	4	SUPERBALL with camera plate, 3/8" and 1/4" thread
BALLU	5	MINI-SUPERBALL with quick-release unit
BALMA	7	Quick-release plate 1/4" for PhaseOne and Mamiya 645 AF / DF
BALME	8, 6	Reversible thread converter, set of 5, 1/4" - 3/8"
BALMI	5	MINI-SUPERBALL PLUS with camera plate, 3/8" and 1/4" thread and panorama plate
BALMO	5	Camera plate for MINI-SUPERBALL, 3/8" and 1/4" thread
BALMU	5	MINI-SUPERBALL PLUS with quick-release unit and panorama plate
BALPA	7	Quick-release plate 1/4", all-purpose
BALPE	7	Quick-release plate 3/8", medium format, with cable catcher
BALPI	7	Quick-release plate 1/4", large cameras
BALPO	4, 8	Camera plate for SUPERBALL, 3/8" and 1/4" thread
BALPU	7, 11	Quick-release plate 3/8", large cameras
BALSA	6, 7	Quick-release unit for SUPERBALL M-Line
BALSI	5, 7	Quick-release unit for MINI-SUPERBALL
BALSO	4, 7, 9, 11	Quick-release unit for SUPERBALL
BALTA	5	Panorama plate for MINI-SUPERBALL
BALTE	7	Quick-release plate 1/4", medium format, with cable catcher
BALTO	4, 8	Panorama plate for SUPERBALL
BALTU	8	Panorama plate with 3/8" or 1/4" thread
BENTA	6	SUPERBALL M-1 with camera plate, 1/4" thread
BENTO	6	SUPERBALL M-1 with quick-release unit
BOLLA	6	SUPERBALL M-2 with quick-release unit
BOLLO	6	SUPERBALL M-2 with camera plate, 1/4" thread
CEBLO 1/4	8	Thread converter Ø18mm, top 1/4" thread, bottom 3/8" tap
CESTU	9	Camera plate for COMBITUBE, 3/8" and 1/4" thread



Sturdy and stable combination: tripod ALFAE with crank-operated rod ALFEA and ball head SUPERBALL® with quick-release plate BALPU.



Laser scanner mounted onto a sturdy tripod* from FOBA by means of the panorama plate ASTIU, the quick-release unit BALSO and the quick-release plate BALPU.

* For more information on FOBA's world-famous stands and tripods, visit www.foba.com

Did you want to know more about FOBA products mentioned without detailed description in the current catalogue?

Product	Mentioned on page	Description	Find more in catalogue
ALFAE	11	Alu tubular tripod, threepart	Studio stands
ALFEA	11	Crank-operated rod for tripod ALFAE	Studio stands
ASNIO	4, 8	Mini tripod, extra sturdy, multi purpose, adapted for COMBITUBE	Studio stands
CEBLO 3/8	6	Interchangeable adapter Ø 18 mm, top 3/8" thread	COMBITUBE
CESRA	8, 9	Support, large, 9.5 kg with male COMBITUBE connector	COMBITUBE
CESTA	8	Top plate with wing nut 3/8", COMBITUBE	COMBITUBE
COGAE	4, 8	All-purpose screw clamp, aperture 45 mm	COMBITUBE
CONRO AS	8	COMBITUBE 80 cm alu black	COMBITUBE
DUPLI	10	Acrylic cone, small	Studio backgrounds, Shooting tables, Lamp stands
SAONO	6	Sliding clamp, hole Ø 30 mm	Studio backgrounds, Shooting tables, Lamp stands
STARI	6	Lamp stand on casters, 2.0 or 3.0 m with sliding clamp SAONO	Studio backgrounds, Shooting tables, Lamp stands

FOBA – tradition and quality for photographers

For over 70 years FOBA has been producing various products for photographers. FOBA's products are exceedingly sturdy, precise and long lasting. That's why they can be found among other things in photo and rental studios, in schools, government agencies and increasingly also in the industry, in the measurement technology.

The high modularity of FOBA products, extending over all the different product lines result in appliances with manifold uses for challenging tasks. Their long lastingness makes the investment even more rewarding.

Along with the tilting and SUPERBALL® ball heads, FOBA offers also studio stands and tripods, the COMBITUBE™ system – a modular supporting and fixing system, the ceiling rail systems ROOF-TRACK for smaller and MEGA-TRACK for bigger constructions, fully automated turntable systems as well as complete equipments for photo and advertising studios.

FOBA tripod heads – for challenging tasks.



FOBA's SUPERBALL® ball heads are suited basically for all common cameras available on the market. Combined with one of FOBA's studio stands, working gets efficient and safe in every aspect.



Long-term monitoring and documenting of a construction site: cameras with plastic box to protect them against the weather mounted each onto a SUPERBALL® M-1 and fixed onto the edge of the roof with a COMBITUBE™ scaffold of FOBA.

Contents

Page

Overview of the tripod heads	2
Features of the tripod heads	3
Ball head SUPERBALL®	4
Ball head MINI-SUPERBALL®	5
SUPERBALL® M-Line	6
Quick-release plates	7
Panoramas	8
Thread converters	8
Example of a custom product	8
Tilting heads	9
Mountings for tripod heads	9, 10
Index of products	11

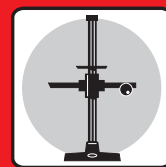
FOBA®
STUDIO-TECHNOLOGY

FOBA AG
Studio-Technology
Friedgrabenstrasse 21
CH-8907 Wettswil
Switzerland

☎ +41 44 701 90 00
☎ +41 44 701 90 01
✉ info@foba.com
www.foba.com

• greater security
• greater stability
• greater modularity

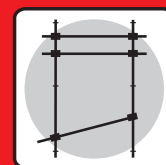
FOBA product lines



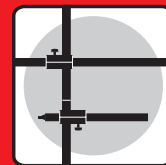
FOBA STUDIO STANDS, TRIPODS
FOBA STATIVE
FOBA PIEDS À COLONNE, TRÉPIEDS



FOBA TRIPOD HEADS
FOBA STATIVKÖPFE
FOBA TÊTES DE TRÉPIEDS



FOBA CEILING RAIL SYSTEM
FOBA DECKENSCHIENEN-SYSTEM
FOBA SYSTÈME RAILS DE PLAFOND



FOBA COMBITUBE SYSTEM
FOBA COMBIROHR® SYSTEM
FOBA SYSTÈME COMBITUBE



FOBA SHOOTING TABLES
FOBA AUFNAHMETISCHE
FOBA TABLES DE PRISE DE VUE



FOBA TURNTABLES
FOBA DREHTELLER
FOBA TABLES TOURNANTES