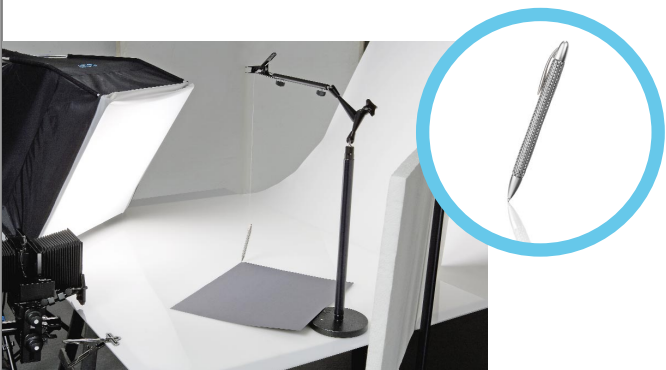
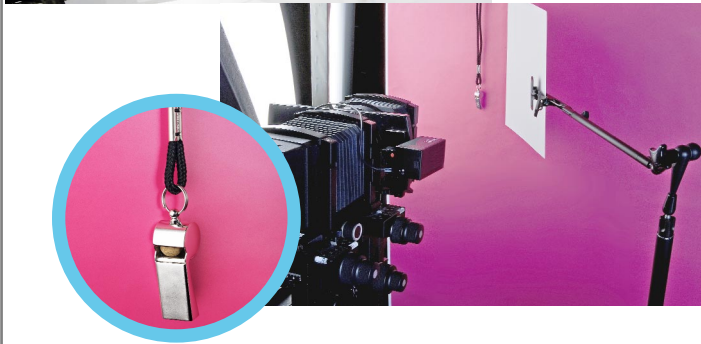
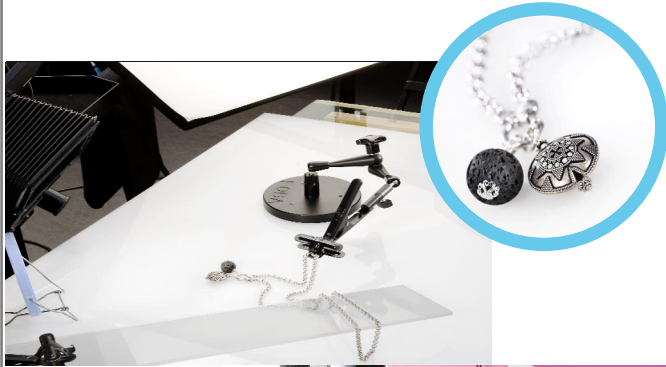


The new FOBA articulated arms supplement the well-known FOBA COMBITUBE system. Surprisingly functional and innovative, allowing incredibly precise setting, they are a welcome addition to the FOBA product range.

## FOBA articulated arms in practice



## FOBA articulated arms

Almost unlimited applications together with simple handling open new dimensions in studio shooting.



## FOBA products in your studio give your creativity wings

Set FOBA articulated arms on top of any COMBITUBE assembly, or on the new round pedestal CIBAF.

## High precision, great possibilities

With its gradual locking mechanism, sturdy CIBAO is top of the list in regard to functionality and precision. Even the most demanding photographer will be impressed by CIBAO's qualities.

Locking of the three joints takes place progressively from bottom to top with one single knob, thereby achieving a degree of precision unknown until now.

## Easy to use

CIBAE is the lighter version of FOBA's articulated arms, designed for lighter loads and less exacting applications. The three joints are locked simultaneously by turning a single knob. CIBAE is topped by a non-rotating bolt to which a CIBAK clamp can be attached.

**FOBA**<sup>®</sup>  
MODUL-TECHNOLOGY

## All about FOBA articulated arms



### Articulated arm CIBAO

- gradual locking of joints
- sturdy and very stable
- top and bottom 3/8" COMBITUBE connections
- red adapter indicates first locked / last released joint (bottom)
- length: 25 cm
- weight: 480 g (1.06 lbs)



### Articulated arm CIBAE

- simultaneous locking of all joints
- light and handy
- topped by non rotating bolt connector for CIBAK clamp or CIBAL extension
- bottom with COMBITUBE connector
- length: 27 cm
- weight: 290 g (0.64 lbs)



### Round pedestal CIBAF

- with COMBITUBE connector
- three additional M6 threads
- diameter: 15 cm
- weight: 2.5 kg (5.5 lbs)



### Clamp CIBAK

- non-rotating bolt connector (replaceable bolt)
- length: 16 cm
- weight: 120 g (0.26 lbs)



### Adapter CIBAP

- top with non-rotating bolt connector for CIBAK clamp or CIBAL extension
- bottom with inner COMBITUBE cone (for CIBAO)
- length: 4.5 cm
- diameter: 25 mm
- weight: 50 g (0.11 lbs)



### CIBAU set

Lighter arm CIBAE is also available together with round pedestal CIBAF and one CIBAK clamp.

### Extension CIBAL

- non-rotating bolt connector top and bottom
- length: 20 cm
- diameter: 14 mm
- weight: 90 g (0.20 lbs)

## FOBA articulated arms with GRAF adaptors



### Adapter CIBAM

- top with COMBITUBE outer cone
- bottom with male M6
- length: 4,0 cm
- diameter: 25 mm
- weight: 40 g (0.09 lbs)



### Adapter CIBAN

- top with female M6
- bottom with COMBITUBE inner cone
- length: 4.5 cm
- diameter: 25 mm
- weight: 50 g (0.11 lbs)

## FOBA articulated arms

Like all other FOBA products, quality and flexibility are persuasive trademarks. FOBA articulated arms complement usefully the COMBITUBE modular system.

